

B-Tec Innovations

B-Tec Innovations is a leading manufacturer of band clamping systems with manufacturing facility in Bangalore, India.

Our focus is always excellence in quality of products, dedication in service to our customers. With this target in mind, we have developed a complete cross section of product line that includes Stainless Steel Cable Ties, Bands, Banding accessories, Industrial identification Tags, Band strapping Tools etc.

Our Engineers & Technicians are well trained to ensure quality and consistency. We make sure that, any product before reaching to our customers, go through a strict quality check by our Inspection Engineers. We strive to exceed customers' expectations by providing quick response to all enquiries, technically competent product recommendations, competitive pricing and on time delivery performance.

Vision

To provide innovative and cost-effective products to our customers adapting latest technology and excellent services.

Mission

- Our mission is to become a leading global manufacturer and solution provider of clamping systems through excellence in customer service and by identifying and solving application problems with differentiated product solutions.
- As a socially responsible company we will ensure that:
 - ✦ All our products are more efficient and environment friendly.
 - ✦ The quality of our products and services are the best to offer maximum uptime to customers.

INDEX

Stainless Steel Cable Ties	Roller Ball Lock Ties Grade 304, Uncoated	6
	Roller Ball Lock Ties Grade 316, Uncoated	7
	Roller Ball Lock Ties Grade 304, Polyester Fully Coated	8
	Roller Ball Lock Ties Grade 316, Polyester Fully Coated	9
	Multilock Ties Grade 316, Uncoated / Stainless Steel Grade 316, Polyester Coated	11
	Releasable Ties Grade 316, Polyester Coated/Grade 316, Uncoated	13
Band and Buckle Systems	Stainless Steel Band Grade 201 / Band Grade 304	15
	Stainless Steel Uncoated Band Grade 316 / PPA Coated Grade 304	16
	Stainless Steel PPA Coated Band Grade 316 / PVC Coated Grade 316	17
	General Purpose Binding Strap	18
	Bands for Insulation Application/Buckles	18-19
	Wing Seal Clip	20
	Crimp Seal	21
	Pre-fit Coated Stainless Steel Band	22
	Pre-fit Uncoated Stainless Steel Band	23
Make your own Pre-fit Band	24	
ID Tag System	Industrial Identification Tags	25
	Easy Reader Stainless Steel Markers	26
	Easy Reader Carriers	27
Metal ID Tag Machines		28
Hand Tools		29
Hand Tools/Accessories		30
Material Data sheet		31
Technical Notes		32-34

APPLICATIONS

- Cable Bundling
- Junction Boxes, Camera and Equipment Mounting on Poles
- Sign Boards & Signal Mounting
- Hose Clamping
- Cable, Pipe, Valve and Equipment Identification
- Thermal / Acoustics Insulation Banding
- Undersea Cable / Pipe bundling
- General Clamping / Fastening
- Cooling Tower Application



MAJOR MARKETS

- ✦ Oil & Gas
- ✦ Municipal & Utility
- ✦ Power Plants & Power Distribution
- ✦ Mining
- ✦ Automotive & Rail
- ✦ Marine & Shipbuilding
- ✦ Chemical & Petro Chemical Plants
- ✦ Construction



STAINLESS STEEL CABLE TIES

Stainless Steel Roller Ball Lock Ties

These are self - locking stainless steel cable ties which are designed for a strong, durable corrosion resistant bundling of cables.

The locking mechanism in roller ball lock self - locking ties is by using a stainless steel hardened ball in a precision formed housing.

- Loop tensile strength available up to 2040 N (459 lbs)
- Sizes from 4.6 mm to 15.0 mm wide in various lengths are available
- Available in Non Corrosive, Non magnetic SS 304 and in SS 316 Grades
- Polyester Coated Ties available
- Uncoated Ties Temperature range (-)80°C to 538° C and Coated Ties Temperature range (-)40°C to 150°C (Polyester)
- Polyester Coating is Halogen Free, Low Smoke, Non-toxic, Flame Retardant and UV Resistant

Applications : Cable bundling to cable ways, Bundling of Cables together, Tying identification tags to cables / hoses, Light duty clamping etc...

Application suggestion : Always use a proper Tool for tensioning and cutting the Ball Lock Ties. Avoid Ball Lock Ties in heavy vibrations area. (Use Multi Lock Ties / Releasable ties in areas of heavy vibration)



Application of Roller Ball Lock Ties



ROLLER BALL LOCK TIES

**Stainless Steel Grade 304,
Uncoated**

Temperature range : (-) 80°C to 538°C
 Flammability : Fire Proof
 Features : UV Resistant, Weather Proof,
 Indoor / Outdoor use



B-Tec Part Code	Type	Width mm	Length mm	Thickness mm	Max Bundle Dia mm	Min Loop Tensile Strength N (Lbs)	Package Quantity Pcs	Apprx. wt per bag Kgs	Suggested Tools
BT4BUUNC	4.6 x 120	4.6	120	0.25	29	600 (135)	100	0.22	
BT4BUUNC	4.6 x 150	4.6	150	0.25	37	600 (135)	100	0.25	
BT4BUUNC	4.6 x 200	4.6	200	0.25	52	600 (135)	100	0.30	
BT4BUUNC	4.6 x 250	4.6	250	0.25	67	600 (135)	100	0.35	
BT4BUUNC	4.6 x 300	4.6	300	0.25	83	600 (135)	100	0.40	
BT4BUUNC	4.6 x 350	4.6	350	0.25	99	600 (135)	100	0.45	
BT4BUUNC	4.6 x 400	4.6	400	0.25	115	600 (135)	100	0.50	
BT4BUUNC	4.6 x 450	4.6	450	0.25	131	600 (135)	100	0.55	
BT4BUUNC	4.6 x 500	4.6	500	0.25	147	600 (135)	100	0.60	
BT4BUUNC	7.9 x 150	7.9	150	0.25	37	900 (202)	100	0.40	
BT4BUUNC	7.9 x 200	7.9	200	0.25	52	900 (202)	100	0.48	
BT4BUUNC	7.9 x 250	7.9	250	0.25	67	900 (202)	100	0.56	
BT4BUUNC	7.9 x 300	7.9	300	0.25	83	900 (202)	100	0.65	
BT4BUUNC	7.9 x 350	7.9	350	0.25	99	900 (202)	100	0.73	
BT4BUUNC	7.9 x 400	7.9	400	0.25	115	900 (202)	100	0.81	
BT4BUUNC	7.9 x 450	7.9	450	0.25	131	900 (202)	100	0.90	
BT4BUUNC	7.9 x 500	7.9	500	0.25	147	900 (202)	100	1.00	
BT4BUUNC	7.9 x 550	7.9	550	0.25	163	900 (202)	100	1.10	
BT4BUUNC	7.9 x 600	7.9	600	0.25	179	900 (202)	100	1.20	
BT4BUUNC	7.9 x 700	7.9	700	0.25	210	900 (202)	100	1.40	
BT4BUUNC	7.9 x 800	7.9	800	0.25	242	900 (202)	100	1.60	
BT4BUUNC	7.9 x 900	7.9	900	0.25	273	900 (202)	100	1.80	
BT4BUUNC	12 x 300	12	300	0.3	83	1600 (360)	50	0.65	
BT4BUUNC	12 x 350	12	350	0.3	99	1600 (360)	50	0.75	
BT4BUUNC	12 x 400	12	400	0.3	115	1600 (360)	50	0.85	
BT4BUUNC	12 x 450	12	450	0.3	131	1600 (360)	50	0.95	
BT4BUUNC	12 x 500	12	500	0.3	147	1600 (360)	50	1.05	
BT4BUUNC	12 x 550	12	550	0.3	163	1600 (360)	50	1.15	
BT4BUUNC	12 x 600	12	600	0.3	179	1600 (360)	50	1.25	
BT4BUUNC	12 x 700	12	700	0.3	210	1600 (360)	50	1.45	
BT4BUUNC	12 x 800	12	800	0.3	242	1600 (360)	50	1.65	
BT4BUUNC	12 x 900	12	900	0.3	273	1600 (360)	50	1.85	
BT4BUUNC	15 x 300	15	300	0.3	83	2040 (459)	25	0.72	
BT4BUUNC	15 x 350	15	350	0.3	99	2040 (459)	25	0.85	
BT4BUUNC	15 x 400	15	400	0.3	115	2040 (459)	25	0.98	
BT4BUUNC	15 x 450	15	450	0.3	131	2040 (459)	25	1.12	
BT4BUUNC	15 x 500	15	500	0.3	147	2040 (459)	25	1.25	
BT4BUUNC	15 x 550	15	550	0.3	163	2040 (459)	25	1.39	
BT4BUUNC	15 x 600	15	600	0.3	179	2040 (459)	25	1.55	
BT4BUUNC	15 x 700	15	700	0.3	210	2040 (459)	25	1.85	
BT4BUUNC	15 x 800	15	800	0.3	242	2040 (459)	25	2.15	
BT4BUUNC	15 x 900	15	900	0.3	273	2040 (459)	25	2.50	
BT4BUUNC	15 x 1000	15	1000	0.3	305	2040 (459)	25	2.85	



ROLLER BALL LOCK TIES

**Stainless Steel Grade 316,
Uncoated**

Temperature range : (-) 80°C to 538°C
 Flammability : Fire Proof
 Features : UV Resistant, Weather Proof,
 Indoor / Outdoor use



B-Tec Part Code	Type	Width mm	Length mm	Thickness mm	Max Bundle Dia mm	Min Loop Tensile Strength N (Lbs)	Package Quantity Pcs	Approx. wt per bag Kgs	Suggested Tools
BT6BUNC	4.6 x 120	4.6	120	0.25	29	600 (135)	100	0.22	
BT6BUNC	4.6 x 150	4.6	150	0.25	37	600 (135)	100	0.25	
BT6BUNC	4.6 x 200	4.6	200	0.25	52	600 (135)	100	0.30	
BT6BUNC	4.6 x 250	4.6	250	0.25	67	600 (135)	100	0.35	
BT6BUNC	4.6 x 300	4.6	300	0.25	83	600 (135)	100	0.40	
BT6BUNC	4.6 x 350	4.6	350	0.25	99	600 (135)	100	0.45	
BT6BUNC	4.6 x 400	4.6	400	0.25	115	600 (135)	100	0.50	
BT6BUNC	4.6 x 450	4.6	450	0.25	131	600 (135)	100	0.55	
BT6BUNC	4.6 x 500	4.6	500	0.25	147	600 (135)	100	0.60	
BT6BUNC	4.6 x 550	4.6	550	0.25	163	600 (135)	100	0.65	
BT6BUNC	7.9 x 150	7.9	150	0.25	37	900 (202)	100	0.40	
BT6BUNC	7.9 x 200	7.9	200	0.25	52	900 (202)	100	0.48	
BT6BUNC	7.9 x 250	7.9	250	0.25	67	900 (202)	100	0.56	
BT6BUNC	7.9 x 300	7.9	300	0.25	83	900 (202)	100	0.65	
BT6BUNC	7.9 x 350	7.9	350	0.25	99	900 (202)	100	0.73	
BT6BUNC	7.9 x 400	7.9	400	0.25	115	900 (202)	100	0.81	
BT6BUNC	7.9 x 450	7.9	450	0.25	131	900 (202)	100	0.90	
BT6BUNC	7.9 x 500	7.9	500	0.25	147	900 (202)	100	1.00	
BT6BUNC	7.9 x 550	7.9	550	0.25	163	900 (202)	100	1.10	
BT6BUNC	7.9 x 600	7.9	600	0.25	179	900 (202)	100	1.20	
BT6BUNC	7.9 x 700	7.9	700	0.25	210	900 (202)	100	1.40	
BT6BUNC	7.9 x 800	7.9	800	0.25	242	900 (202)	100	1.60	
BT6BUNC	7.9 x 900	7.9	900	0.25	273	900 (202)	100	1.80	
BT6BUNC	12 x 300	12	300	0.35	83	1600 (360)	50	0.65	
BT6BUNC	12 x 350	12	350	0.35	99	1600 (360)	50	0.75	
BT6BUNC	12 x 400	12	400	0.35	115	1600 (360)	50	0.85	
BT6BUNC	12 x 450	12	450	0.35	131	1600 (360)	50	0.95	
BT6BUNC	12 x 500	12	500	0.35	147	1600 (360)	50	1.05	
BT6BUNC	12 x 550	12	550	0.35	163	1600 (360)	50	1.15	
BT6BUNC	12 x 600	12	600	0.35	179	1600 (360)	50	1.25	
BT6BUNC	12 x 700	12	700	0.35	210	1600 (360)	50	1.45	
BT6BUNC	12 x 800	12	800	0.35	242	1600 (360)	50	1.65	
BT6BUNC	12 x 900	12	900	0.35	273	1600 (360)	50	1.85	
BT6BUNC	15 x 300	15	300	0.35	83	2040 (459)	25	0.72	
BT6BUNC	15 x 350	15	350	0.35	99	2040 (459)	25	0.85	
BT6BUNC	15 x 400	15	400	0.35	115	2040 (459)	25	0.98	
BT6BUNC	15 x 450	15	450	0.35	131	2040 (459)	25	1.12	
BT6BUNC	15 x 500	15	500	0.35	147	2040 (459)	25	1.25	
BT6BUNC	15 x 550	15	550	0.35	163	2040 (459)	25	1.39	
BT6BUNC	15 x 600	15	600	0.35	179	2040 (459)	25	1.55	
BT6BUNC	15 x 700	15	700	0.35	210	2040 (459)	25	1.85	
BT6BUNC	15 x 800	15	800	0.35	242	2040 (459)	25	2.15	
BT6BUNC	15 x 900	15	900	0.35	273	2040 (459)	25	2.50	
BT6BUNC	15 x 1000	15	1000	0.35	305	2040 (459)	25	2.85	



ROLLER BALL LOCK TIES

**Stainless Steel Grade 304,
Polyester Fully coated**

Temperature range : (-) 40° C to 150° C
 Flammability : Fire Retardant, Non Toxic,
 Zero Halogen, Low Smoke
 Features : UV Resistant, Weather Proof,
 Indoor / Outdoor use



B-Tec Part Code	Type	Width mm	Length mm	Thickness mm	Max Bundle Dia mm	Min Loop Tensile Strength N (Lbs)	Package Quantity Pcs	Apprx. wt per bag Kgs	Suggested Tools
BT4BEFC	4.6 x 120	4.6	120	0.25	29	580 (130)	100	0.22	 BTCT007
BT4BEFC	4.6 x 150	4.6	150	0.25	37	580 (130)	100	0.25	
BT4BEFC	4.6 x 200	4.6	200	0.25	52	580 (130)	100	0.30	
BT4BEFC	4.6 x 250	4.6	250	0.25	67	580 (130)	100	0.35	
BT4BEFC	4.6 x 300	4.6	300	0.25	83	580 (130)	100	0.40	
BT4BEFC	4.6 x 350	4.6	350	0.25	99	580 (130)	100	0.45	
BT4BEFC	4.6 x 400	4.6	400	0.25	115	580 (130)	100	0.50	
BT4BEFC	4.6 x 450	4.6	450	0.25	131	580 (130)	100	0.55	
BT4BEFC	4.6 x 500	4.6	500	0.25	147	580 (130)	100	0.60	
BT4BEFC	7.9 x 150	7.9	150	0.25	37	860 (193)	100	0.40	
BT4BEFC	7.9 x 200	7.9	200	0.25	52	860 (193)	100	0.48	
BT4BEFC	7.9 x 250	7.9	250	0.25	67	860 (193)	100	0.56	
BT4BEFC	7.9 x 300	7.9	300	0.25	83	860 (193)	100	0.65	
BT4BEFC	7.9 x 350	7.9	350	0.25	99	860 (193)	100	0.73	
BT4BEFC	7.9 x 400	7.9	400	0.25	115	860 (193)	100	0.81	
BT4BEFC	7.9 x 450	7.9	450	0.25	131	860 (193)	100	0.90	
BT4BEFC	7.9 x 500	7.9	500	0.25	147	860 (193)	100	1.00	
BT4BEFC	7.9 x 550	7.9	550	0.25	163	860 (193)	100	1.10	
BT4BEFC	7.9 x 600	7.9	600	0.25	179	860 (193)	100	1.20	
BT4BEFC	7.9 x 700	7.9	700	0.25	210	860 (193)	100	1.40	
BT4BEFC	7.9 x 800	7.9	800	0.25	242	860 (193)	100	1.60	
BT4BEFC	7.9 x 900	7.9	900	0.25	273	860 (193)	100	1.80	
BT4BEFC	12 x 300	12	300	0.3	83	1540 (346)	50	0.65	 BTST008
BT4BEFC	12 x 350	12	350	0.3	99	1540 (346)	50	0.75	
BT4BEFC	12 x 400	12	400	0.3	115	1540 (346)	50	0.85	
BT4BEFC	12 x 450	12	450	0.3	131	1540 (346)	50	0.95	
BT4BEFC	12 x 500	12	500	0.3	147	1540 (346)	50	1.05	
BT4BEFC	12 x 550	12	550	0.3	163	1540 (346)	50	1.15	
BT4BEFC	12 x 600	12	600	0.3	179	1540 (346)	50	1.25	
BT4BEFC	12 x 700	12	700	0.3	210	1540 (346)	50	1.45	
BT4BEFC	12 x 800	12	800	0.3	242	1540 (346)	50	1.65	
BT4BEFC	12 x 900	12	900	0.3	273	1540 (346)	50	1.85	
BT4BEFC	15 x 300	15	300	0.35	83	2000 (450)	25	0.72	
BT4BEFC	15 x 350	15	350	0.35	99	2000 (450)	25	0.85	
BT4BEFC	15 x 400	15	400	0.35	115	2000 (450)	25	0.98	
BT4BEFC	15 x 450	15	450	0.35	131	2000 (450)	25	1.12	
BT4BEFC	15 x 500	15	500	0.35	147	2000 (450)	25	1.25	
BT4BEFC	15 x 550	15	550	0.35	163	2000 (450)	25	1.39	
BT4BEFC	15 x 600	15	600	0.35	179	2000 (450)	25	1.55	
BT4BEFC	15 x 700	15	700	0.35	210	2000 (450)	25	1.85	
BT4BEFC	15 x 800	15	800	0.35	242	2000 (450)	25	2.15	
BT4BEFC	15 x 900	15	900	0.35	273	2000 (450)	25	2.50	
BT4BEFC	15 x 1000	15	1000	0.35	305	2000 (450)	25	2.85	



ROLLER BALL LOCK TIES

**Stainless Steel Grade 316,
Polyester Fully coated**

- Temperature range : (-) 40° C to 150° C
- Flammability : Fire Retardant, Non Toxic,
Zero Halogen, Low Smoke
- Features : UV Resistant, Weather Proof,
Indoor / Outdoor use



B-Tec Part Code	Type	Width mm	Length mm	Thickness mm	Max Bundle Dia mm	Min Loop Tensile Strength N (Lbs)	Package Quantity Pcs	Apprx. wt per bag Kgs	Suggested Tools
BT68EFC	4.6 x 120	4.6	120	0.25	29	580 (130)	100	0.22	
BT68EFC	4.6 x 150	4.6	150	0.25	37	580 (130)	100	0.25	
BT68EFC	4.6 x 200	4.6	200	0.25	52	580 (130)	100	0.30	
BT68EFC	4.6 x 250	4.6	250	0.25	67	580 (130)	100	0.35	
BT68EFC	4.6 x 300	4.6	300	0.25	83	580 (130)	100	0.40	
BT68EFC	4.6 x 350	4.6	350	0.25	99	580 (130)	100	0.45	
BT68EFC	4.6 x 400	4.6	400	0.25	115	580 (130)	100	0.50	
BT68EFC	4.6 x 450	4.6	450	0.25	131	580 (130)	100	0.55	
BT68EFC	4.6 x 500	4.6	500	0.25	147	580 (130)	100	0.60	
BT68EFC	7.9 x 150	7.9	150	0.25	37	860 (193)	100	0.40	
BT68EFC	7.9 x 200	7.9	200	0.25	52	860 (193)	100	0.48	
BT68EFC	7.9 x 250	7.9	250	0.25	67	860 (193)	100	0.56	
BT68EFC	7.9 x 300	7.9	300	0.25	83	860 (193)	100	0.65	
BT68EFC	7.9 x 350	7.9	350	0.25	99	860 (193)	100	0.73	
BT68EFC	7.9 x 400	7.9	400	0.25	115	860 (193)	100	0.81	
BT68EFC	7.9 x 450	7.9	450	0.25	131	860 (193)	100	0.90	
BT68EFC	7.9 x 500	7.9	500	0.25	147	860 (193)	100	1.00	
BT68EFC	7.9 x 550	7.9	550	0.25	163	860 (193)	100	1.10	
BT68EFC	7.9 x 600	7.9	600	0.25	179	860 (193)	100	1.20	
BT68EFC	7.9 x 700	7.9	700	0.25	210	860 (193)	100	1.40	
BT68EFC	7.9 x 800	7.9	800	0.25	242	860 (193)	100	1.60	
BT68EFC	7.9 x 900	7.9	900	0.25	273	860 (193)	100	1.80	
BT68EFC	12 x 300	12	300	0.3	83	1540 (346)	50	0.65	
BT68EFC	12 x 350	12	350	0.3	99	1540 (346)	50	0.75	
BT68EFC	12 x 400	12	400	0.3	115	1540 (346)	50	0.85	
BT68EFC	12 x 450	12	450	0.3	131	1540 (346)	50	0.95	
BT68EFC	12 x 500	12	500	0.3	147	1540 (346)	50	1.05	
BT68EFC	12 x 550	12	550	0.3	163	1540 (346)	50	1.15	
BT68EFC	12 x 600	12	600	0.3	179	1540 (346)	50	1.25	
BT68EFC	12 x 700	12	700	0.3	210	1540 (346)	50	1.45	
BT68EFC	12 x 800	12	800	0.3	242	1540 (346)	50	1.65	
BT68EFC	12 x 900	12	900	0.3	273	1540 (346)	50	1.85	
BT68EFC	15 x 300	15	300	0.35	83	2000 (450)	25	0.72	
BT68EFC	15 x 350	15	350	0.35	99	2000 (450)	25	0.85	
BT68EFC	15 x 400	15	400	0.35	115	2000 (450)	25	0.98	
BT68EFC	15 x 450	15	450	0.35	131	2000 (450)	25	1.12	
BT68EFC	15 x 500	15	500	0.35	147	2000 (450)	25	1.25	
BT68EFC	15 x 550	15	550	0.35	163	2000 (450)	25	1.39	
BT68EFC	15 x 600	15	600	0.35	179	2000 (450)	25	1.55	
BT68EFC	15 x 700	15	700	0.35	210	2000 (450)	25	1.85	
BT68EFC	15 x 800	15	800	0.35	242	2000 (450)	25	2.15	
BT68EFC	15 x 900	15	900	0.35	273	2000 (450)	25	2.50	
BT68EFC	15 x 1000	15	1000	0.35	305	2000 (450)	25	2.85	



STAINLESS STEEL CABLE TIES

Stainless Steel Multi Lock Ties

These are self - locking Stainless Steel Cable Ties with a Positive Locking System which are designed for an Extra Strong, Vibration Proof, Durable, Corrosion Resistant Bundling of Cables.

- The locking mechanism in multi lock self locking ties is a positive engagement of multi teeth on the head to the slots on the band
- Loop Tensile Strength is upto 2000 N (450 lbs)
- 7 mm & 12 mm width and in various lengths are available
- Available in Non Corrosive, Non magnetic High Grade SS 316
- Polyester Coated Ties available
- Uncoated Ties Temperature ranges from (-)80°C to 538°C and Polyester Coated Ties Temperature ranges from (-)40°C to 150°C (Polyester)
- Polyester Coating is Halogen Free, Low Smoke, Non-toxic, Flame Retardant and UV Resistant

Applications : Cable bundling to cable ways, Bundling of Cables together, Tying cables / hoses to poles, light duty clamping etc.

Application suggestions : Always use a proper Tool for tensioning and cutting the Multi Lock Ties. Excellent for applications where heavy vibrations or thermal cycles expected.



Application of Multi Lock Ties




MULTI LOCK TIES

Stainless Steel Grade 316, Uncoated

Temperature range : (-) 80°C to 538°C
 Flammability : Fire Proof
 Features : UV Resistant, Weather Proof,
 Indoor / Outdoor use




B-Tec Part Code	Type	Width mm	Length mm	Thickness mm	Max Bundle Dia mm	Min Loop Tensile Strength N (lbs)	Package Quantity Pcs	Apprx. wt per bag Kgs	Suggested Tools
BT6MUNC	7 X 150	7	150	0.3	37	1110 (250)	100	0.27	 BTCT 007
BT6MUNC	7 X 225	7	225	0.3	58	1110 (250)	100	0.43	
BT6MUNC	7 X 300	7	300	0.3	83	1110 (250)	100	0.55	
BT6MUNC	7 X 450	7	450	0.3	131	1110 (250)	100	0.75	
BT6MUNC	7 X 610	7	610	0.3	179	1110 (250)	100	1.05	
BT6MUNC	12 x 150	12	150	0.3	37	2000(450)	100	1.10	
BT6MUNC	12 x 225	12	225	0.3	58	2000(450)	100	0.50	
BT6MUNC	12 x 300	12	300	0.3	83	2000(450)	100	0.80	
BT6MUNC	12 x 450	12	450	0.3	131	2000(450)	100	1.00	
BT6MLINC	12 x 610	12	610	0.3	179	2000(450)	100	1.35	
BT6MLINC	12 x 760	12	760	0.3	220	2000(450)	100	1.9	



Stainless Steel Grade 316, Polyester coated

Temperature range : (-) 40° C to 150°C
 Flammability : Fire Retardant, Non Toxic,
 Zero Halogen, Low Smoke
 Features : UV Resistant, Weather Proof,
 Indoor / Outdoor use



B-Tec Part Code	Type	Width mm	Length mm	Thickness mm	Max Bundle Dia mm	Min Loop Tensile Strength N (lbs)	Package Quantity Pcs	Apprx. wt per bag Kgs	Suggested Tools
BT6MEFC	7 X 150	7	150	0.3	37	1110 (250)	100	0.27	 BTCT 007
BT6MEFC	7 X 225	7	225	0.3	58	1110 (250)	100	0.43	
BT6MEFC	7 X 300	7	300	0.3	83	1110 (250)	100	0.55	
BT6MEFC	7 X 450	7	450	0.3	131	1110 (250)	100	0.75	
BT6MEFC	7 X 610	7	610	0.3	179	1110 (250)	100	1.05	
BT6MEFC	12 x 150	12	150	0.35	37	2000(450)	100	1.10	
BT6MEFC	12 x 225	12	225	0.35	58	2000(450)	100	0.50	
BT6MEFC	12 x 300	12	300	0.35	83	2000(450)	100	0.80	
BT6MEFC	12 x 450	12	450	0.35	131	2000(450)	100	1.00	
BT6MEFC	12 x 610	12	610	0.35	179	2000(450)	100	1.35	
BT6MEFC	12 x 760	12	760	0.35	220	2000(450)	100	1.9	





STAINLESS STEEL CABLE TIES

Stainless Steel Releasable Ties

Releasable / Re-usable Stainless Steel Ties are designed for strong, durable, corrosion resistant, vibration resistant bundling of cables. The bundling can be done by tool or by hand.

- The Positive locking mechanism that can be opened and re-lock
- Two sizes available, 6.35 mm wide and 9.5 mm wide length upto 1200 mm
- Loop Tensile Strength upto 1900 N (425 lbs.)
- Available in Stainless Steel Grade 316
- Epoxy / Polyester coated Ties available
- Uncoated Ties Temperature ranges from (-)80°C to 538°C and Polyester Coated Ties Temperature ranges from (-)40°C to 150°C
- Epoxy / Polyester Coating is Non Toxic, Flame Retardant, Halogen Free, Low Smoke and UV Resistant

Applications : Cable bundling to cable ways, Bundling of Cables together, Light Duty Clamping etc. Reusable. It can be used in double wrap for special strength applications.

Application suggestion : These are mostly simple to use SS ties. Can be used in area with heavy vibration or temperature cycles. Do not cut the tail unless it is necessary, keep in bent so that the ties can be re-used.



Releasable Ties

RELEASABLE TIES

Stainless Steel Grade 316, Polyester Coated

Temperature range : (-) 40° C to 150° C
 Flammability : Fire Retardant, Non Toxic,
 Zero Halogen, Low Smoke
 Features : UV Resistant,
 Weather Proof Indoor / Outdoor use



B-Tec Part Code	Type	Width mm	Length mm	Thickness mm	Max Bundle Dia mm	Min Loop Tensile Strength N (lbs)	Package Quantity Pcs	Apprx.wt per bag Kgs	Suggested Tools
BT6REFC	6.35 X 150	6.35	150	0.38	38	1200 (270)	100	0.65	 BTST 009
BT6REFC	6.35 X 225	6.35	225	0.38	62	1200 (270)	100	0.85	
BT6REFC	6.35 X 300	6.35	300	0.38	85	1200 (270)	100	1.00	
BT6REFC	6.35 X 360	6.35	360	0.38	106	1200 (270)	100	1.20	
BT6REFC	6.35 X 450	6.35	450	0.38	135	1200 (270)	100	1.45	
BT6REFC	6.35 X 600	6.35	600	0.38	180	1200 (270)	100	1.80	
BT6REFC	9.5 X 150	9.50	150	0.38	38	1900 (425)	100	0.85	 BTCT 020
BT6REFC	9.5 X 225	9.50	225	0.38	62	1900 (425)	100	1.15	
BT6REFC	9.5 X 300	9.50	300	0.38	85	1900 (425)	100	1.50	
BT6REFC	9.5 X 360	9.50	360	0.38	106	1900 (425)	100	1.80	
BT6REFC	9.5 X 450	9.50	450	0.38	135	1900 (425)	100	2.30	
BT6REFC	9.5 X 600	9.50	600	0.38	180	1900 (425)	100	3.15	
BT6REFC	9.5 X 760	9.50	760	0.38	230	1900 (425)	100	3.30	

Stainless Steel Grade 316, Uncoated

Temperature range : (-) 80°C to 538°C
 Flammability : Fire Proof
 Features : UV Resistant, Weather Proof



B-Tec part code	Type	Width mm	Length mm	Thickness mm	Max Bundle Dia mm	Min Loop Tensile Strength N (lbs)	Package Quantity Pcs	Apprx.wt per bag Kgs	Suggested Tools
BT6RUNC	6.35 X 150	6.35	150	0.38	38	1200 (270)	100	0.65	 BTST 009
BT6RUNC	6.35 X 225	6.35	225	0.38	62	1200 (270)	100	0.85	
BT6RUNC	6.35 X 300	6.35	300	0.38	85	1200 (270)	100	1.00	
BT6RUNC	6.35 X 360	6.35	360	0.38	106	1200 (270)	100	1.20	
BT6RUNC	6.35 X 450	6.35	450	0.38	135	1200 (270)	100	1.45	
BT6RUNC	6.35 X 600	6.35	600	0.38	180	1200 (270)	100	1.80	
BT6RUNC	9.5 X 150	9.50	150	0.38	38	1900 (425)	100	0.85	 BTCT 020
BT6RUNC	9.5 X 225	9.50	225	0.38	62	1900 (425)	100	1.15	
BT6RUNC	9.5 X 300	9.50	300	0.38	85	1900 (425)	100	1.50	
BT6RUNC	9.5 X 360	9.50	360	0.38	106	1900 (425)	100	1.80	
BT6RUNC	9.5 X 450	9.50	450	0.38	135	1900 (425)	100	2.30	
BT6RUNC	9.5 X 600	9.50	600	0.38	180	1900 (425)	100	3.15	
BT6RUNC	9.5 X 760	9.50	760	0.38	230	1900 (425)	100	3.30	

STAINLESS STEEL BANDS / BUCKLES / CLIPS

Stainless Steel Bands can be used as a better, easy and economical solution for clamping. Normally Band Clamping is done by tensioning the band using a simple tool and locking with a Buckle or Clip or Seal.

The major advantages are:

- Easy and fast application
- Can be used for different shapes, sizes (conform to any shape) unlike conventional clamps
- High strength, light weight and yet economical
- Corrosion resistant, high temperature and specific application steel grades available
- Unlike welded joints, band clamping can be used on dissimilar materials and on non-metals
- Does not get loosen on vibration (withstand mechanical vibration, Thermal cycles wind etc.)

Hose clamping, Pole applications such as Sign boards, Signals, Junction boxes, Camera, Cable bundling, Insulation banding, Pipes, Structural clamping, General fastening are few of the applications.

Marine & Ship building, Transportation & Traffic, Oil & Gas, Chemical & Petrochemical, Power & Telecom, Municipal & Utility, Subsea & Aerospace, Mining & Construction are some of the areas of applications of the Bands, Buckles & Clips.



Teeth type Buckle



Wing Seal Clips



Application of coated & uncoated band

BAND Stainless Steel Grade 201

Commonly used Austenitic Stainless Steel Bands having a good strength and good resistance to normal industrial corrosive atmosphere. Standard packing in paperboard boxes. Available in Plastic Tote packing also. Please add suffix "T" for Tote packed bands (eg. BT1BDUNT).

B-Tec Part Code	Type	Width Inch	Length/RL FT(m)	Thickness Inch	Breaking Strength kgs (lbs)	Approx Weight Kgs	Suggested Clip/Buckle	Suggested Tool
BT1BDUN	9.5 X 0.38	$\frac{3}{8}$	100 (30.48)	0.015	250 (560)	0.85	BT1BLTH	BTST002/BTST010 /BTST005
BT1BDUN	12.7 X 0.76	$\frac{1}{2}$	100 (30.48)	0.030	650 (1500)	2.3	BT1BLTH	BTST002/BTST005/BTST006
BT1BDUN	15.9 X 0.76	$\frac{5}{8}$	100 (30.48)	0.030	850 (1875)	2.9	BT1BLTH	BTST002/BTST005/BTST006
BT1BDUN	19.0 X 0.76	$\frac{3}{4}$	100 (30.48)	0.030	1015 (2250)	3.5	BT1BLTH	BTST002/BTST005/BTST006

BAND Stainless Steel Grade 304

Austenitic Stainless Steel Bands having better corrosion resistance to most of the Chemicals and Oxidizing agents. Standard packing in paperboard boxes. Available in Plastic Tote packing also. Please add suffix "T" for Tote packed bands (e.g. BT4BDUNT).

B-Tec Part Code	Type	Width Inch	Length/RL FT(m)	Thickness Inch	Breaking Strength kgs (lbs)	Approx Weight Kgs	Suggested Clip/Buckle	Suggested Tool
BT4BDUN	9.5 X 0.38	$\frac{3}{8}$	100 (30.48)	0.015	190 (420)	0.85	BT4BLTH/BT4CLUC	BTST002/BTST010/BTST005
BT4BDUN	12.7 X 0.38	$\frac{1}{2}$	100 (30.48)	0.015	255 (562)	1.15	BT4BLTH/BT4CLUC	BTST002/BTST005/BTST006
BT4BDUN	12.7 X 0.51	$\frac{1}{2}$	100 (30.48)	0.020	340 (750)	1.50	BT4CLUC/BT4BLTH	BTST002/BTST005/BTST006
BT4BDUN	12.7 X 0.76	$\frac{1}{2}$	100 (30.48)	0.030	510 (1125)	2.30	BT4CLUC/BT4BLTH	BTST002/BTST005/BTST006
BT4BDUN	15.9 X 0.38	$\frac{5}{8}$	100 (30.48)	0.015	320 (705)	1.45	BT4BLTH/BT4CLUC	BTST002/BTST006
BT4BDUN	15.9 X 0.51	$\frac{5}{8}$	100 (30.48)	0.020	427 (940)	1.95	BT4BLTH/BT4CLUC	BTST002/BTST005/BTST006
BT4BDUN	15.9 X 0.76	$\frac{5}{8}$	100 (30.48)	0.030	637 (1405)	2.90	BT4BLTH/BT4CLUC	BTST002/BTST005/BTST006
BT4BDUN	19.0 X 0.38	$\frac{3}{4}$	100 (30.48)	0.015	380 (840)	1.75	BT4BLTH/BT4CLUC	BTST002/BTST005/BTST006
BT4BDUN	19.0 X 0.51	$\frac{3}{4}$	100 (30.48)	0.020	510 (1125)	2.35	BT4BLTH/BT4CLUC	BTST002/BTST005/BTST006
BT4BDUN	19.0 X 0.76	$\frac{3}{4}$	100 (30.48)	0.030	760 (1680)	3.50	BT4BLTH/BT4CLUC	BTST002/BTST005/BTST006



BAND Stainless Steel Grade 316

Austenitic Stainless Steel Bands having very good corrosion resistance to salt water, Marine environments, most of the Chemicals and Oxidizing / Reducing agents. Standard packing in paperboard boxes. Available in Plastic Tote packing also. Please add suffix "T" for Tote packed bands (eg. BT6BDUNT).

B-Tec Part Code	Type	Width Inch	Length/RL FT(m)	Thickness Inch	Breaking Strength kgs (lbs)	Approx Weight Kgs	Suggested Clip/Buckle	Suggested Tool
BT6BDUN	9.5 X 0.38	3/8	100 (30.48)	0.015	203 (450)	0.85	BT6BLTH/BT6CLUC	BTST002/BTST010 /BTST005
BT6BDUN	12.7 X 0.38	1/2	100 (30.48)	0.015	271 (600)	1.15		BTST002/BTST005/BTST006
BT6BDUN	12.7 X 0.51	1/2	100 (30.48)	0.020	364 (800)	1.50		BTST002/BTST005/BTST006
BT6BDUN	12.7 X 0.76	1/2	100 (30.48)	0.030	542 (1200)	2.30		BTST002/BTST005/BTST006
BT6BDUN	15.9 X 0.38	5/8	100 (30.48)	0.015	340 (750)	1.45		BTST002/BTST005/BTST006
BT6BDUN	15.9 X 0.51	5/8	100 (30.48)	0.020	455 (1000)	1.95		BTST002/BTST005/BTST006
BT6BDUN	15.9 X 0.76	5/8	100 (30.48)	0.030	680 (1500)	2.90		BTST002/BTST005/BTST006
BT6BDUN	19.0 X 0.38	3/4	100 (30.48)	0.015	407 (900)	1.75		BTST002/BTST005/BTST006
BT6BDUN	19.0 X 0.51	3/4	100 (30.48)	0.020	545 (1200)	2.35		BTST002/BTST005/BTST006
BT6BDUN	19.0 X 0.76	3/4	100 (30.48)	0.030	813 (1800)	3.50		BTST002/BTST005/BTST006

PPA COATED BAND Stainless Steel Grade 304

Austenitic Stainless Steel Grade 304 bands with Performance Polymer Alloy (PPA)571 Coating.

PPA 571 Coating Properties :

- Fire Retardant, Low Smoke, Zero Halogen, UV and Weather Resistant, Non Toxic
- Resistant to salt water, Mild acids / alkalis most of the industrial chemicals, Detergents, Airborne pollutants etc.
- Good Abrasion / Impact resistance and dialectical strength
- Coating melting temperature 105°C



B-Tec Part Code	Type	Width Inch	Length/RL FT(m)	Thickness Inch	Breaking Strength kgs (lbs)	Approx Weight Kgs	Suggested Clip/Buckle	Suggested Tool
BT4BDPPA	6.35	1/4	82.50 (25.00)	0.38 /1.1	127(280)	0.8	BT4CLUC	BTST009/BTST005
BT4BDPPA	9.50	3/8	82.50 (25.00)	0.38 /1.1	190 (420)	1.1	BT4CLUC	BTST009/BTST005
BT4BDPPA	12.70	1/2	82.50 (25.00)	0.38 /1.1	255 (562)	1.4	BT4CLUC	BTST009/BTST005
BT4BDPPA	15.60	5/8	82.50 (25.00)	0.38 /1.1	320 (705)	1.8	BT4CLUC	BTST009/BTST005
BT4BDPPA	19.00	3/4	82.50 (25.00)	0.38 /1.1	360 (840)	2.2	BT4CLUC	BTST009/BTST005

PPA COATED BAND Stainless Steel Grade 316

Austenitic Stainless Steel Grade 316 Bands with Performance
Polymer Alloy (PPA) 571 coating.



B-Tec Part Code	Type	Width Inch	Length/RL FT(m)	Thickness Inch	Breaking Strength kgs (lbs)	Approx Weight Kgs	Suggested Clip/Buckle	Suggested Tool
BT6BDPPA	6.35	1/4	82.50 (25.00)	0.38 /1.1	135 (300)	0.8	BT6CLUC	BTST009/BTST005
BT6BDPPA	9.50	5/16	82.50 (25.00)	0.38 /1.1	203 (450)	1.1	BT6CLUC	BTST009/BTST005
BT6BDPPA	12.70	1/2	82.50 (25.00)	0.38 /1.1	271 (600)	1.4	BT6CLUC	BTST009/BTST005
BT6BDPPA	15.60	5/8	82.50 (25.00)	0.38 /1.1	340 (750)	1.8	BT6CLUC	BTST009/BTST005
BT6BDPPA	19.00	3/4	82.50 (25.00)	0.38 /1.1	407(900)	2.2	BT6CLUC	BTST009/BTST005

PVC COATED BAND Stainless Steel Grade 316

Austenitic Stainless Steel Grade 316 Bands with PVC coating.

PVC Coating Properties:

- Fire Retardant, UV and Weather Resistant, Non Toxic
- Resistant to salt water, Mild acids / alkalis most of the Industrial Chemicals, Detergents, Airborne Pollutants etc (not good for Aromatic Hydrocarbons, Ketones, and Cyclic Ethers)
- Moderate to Good Abrasion / Impact Resistance and Good Dialectical Strength
- Coating Melting Temperature 140°C



B-Tec Part Code	Type	Width Inch	Length/RL FT(m)	Thickness Inch	Breaking Strength kgs (lbs)	Approx Weight Kgs	Suggested Clip/Buckle	Suggested Tool
BT6BDPVC	9.50	5/16	82.50 (25.00)	0.38 /1.2	203 (450)	1.2	BT6CLUC	BTST009/BTST005
BT6BDPVC	13.00	1/2	82.50 (25.00)	0.38 /1.2	271 (600)	1.5	BT6CLUC	BTST009/BTST005
BT6BDPVC	15.90	5/8	82.50 (25.00)	0.38 /1.2	340 (750)	1.9	BT6CLUC	BTST009/BTST005
BT6BDPVC	19.5	3/4	82.50 (25.00)	0.38 /1.2	407(900)	2.3	BT6CLUC	BTST009/BTST005

* Polyester coated bands are also available on request for all the sizes as of PPA Coated Bands in SS 304 & SS 316.

Use part number as B74BDPEC / BT6BDPEC.

General Purpose Binding Strap

These bands can be used for making any shape clamp for the purpose of Electrical, Plumbing and HVAC or for any other use. No special tool required. Cut the band from the roll, make to your required shape and fasten with bolt / nut. Available uncoated type in Galvanized Steel, SS 304, SS 316 and Polyester Coated type in SS 304 and SS 316.



B-Tec Part Code	Material Uncoated /Polyester or PPA coated	Length (m)	Made out of Band of Width In	Thickness mm	Hole size	Approx Weight Per RL (Kgs)
BT9GPSU12	GS -Unctd	25	1/2	0.76	5	1.5
BT9GPSU19	GS -Unctd	25	3/4	0.76	7	2.3
BT4GPSU12	SS 304 -Unctd	25	1/2	0.76	5	1.5
BT4GPSU19	SS 304 -Unctd	25	3/4	0.76	7	2.3
BT4GPSC12	SS 304 -Ctd	25	1/2	0.76	5	1.7
BT4GPSC19	SS 304 -Ctd	25	3/4	0.76	7	2.5
BT6GPSU12	SS 316 -Unctd	25	1/2	0.76	5	1.5
BT6GPSU19	SS 316 -Unctd	25	3/4	0.76	7	2.3
BT6GPSC12	SS 316 -Ctd	25	1/2	0.76	5	1.7
BT6GPSC19	SS 316 -Ctd	25	3/4	0.76	7	2.5



Bands for Insulation Application Stainless Steel Grade 304

Available in Jumbo Open Reel or Custom packed 20 Kg to 35 Kg (Mill Edged) for Insulation Banding Application. Can be used with Wing Seal Clips BT4CLUN or Crimping Seals BT4CRSL using tools BTST002 /BTST005 /BTST006 /BTST009 / BTST010 / BTST011.

Also see the Band Cutting Tool BTST019, Band Crimping Tool BTST018.



B-Tec part code	Type	Width Inches	Thickness Inches	Breaking Strength Kgs (lbs)	Approx length per Kg (M)	Suggested Tools
BT4BDIS	9.5 X 0.38	3/8	0.015	190 (420)	35.00	BTST010/
BT4BDIS	12.7 X 0.38	1/2	0.015	255 (562)	26.20	BTST002/
BT4BDIS	12.7 X 0.51	1/2	0.020	340 (750)	19.50	BTST009/
BT4BDIS	15.9 X 0.38	5/8	0.015	320 (705)	21.00	BTST005/
BT4BDIS	15.9 X 0.51	5/8	0.020	427 (940)	15.60	BTST011/
BT4BDIS	19.0 X 0.38	3/4	0.015	360 (840)	17.50	BTST006
BT4BDIS	19.0 X 0.51	3/4	0.020	510 (1125)	13.10	



BANDS for Insulation Application Stainless Steel Grade 316

B-Tec Part Code	Type	Width Inches	Thickness Inches	Breaking Strength Kgs (lbs)	Approx length per Kg (M)	Suggested Tools
BT6BDIS	9.5 X 0.38	3/8	0.015	190 (420)	35.00	BTST010/
BT6BDIS	12.7 X 0.38	1/2	0.015	256 (562)	26.20	BTST002/
BT6BDIS	12.7 X 0.51	1/2	0.020	340 (760)	19.50	BTST009/
BT6BDIS	15.9 X 0.38	5/8	0.015	320 (705)	21.00	BTST005/
BT6BDIS	15.9 X 0.51	5/8	0.020	427 (940)	15.60	BTST011/
BT6BDIS	19.0 X 0.38	3/4	0.015	380 (840)	17.50	BTST006
BT6BDIS	19.0 X 0.51	3/4	0.020	510 (1125)	13.10	



BUCKLES - Teeth type Stainless Steel Grade 201 / 202

B-Tec Part Code	Size Inches / mm	Thickness Inches / mm	Pcs Per Box	Approx Weight Per Bx (Kgs)
BT1BLTH	3/8 9.50	0.040 1.0	100	0.50
BT1BLTH	1/2 12.7	0.051 1.3	100	1.00
BT1BLTH	5/8 15.9	0.051 1.3	100	1.20
BT1BLTH	3/4 19.0	0.051 1.3	100	1.60

BUCKLES - Teeth type Stainless Steel Grade 304

B-Tec Part Code	Size Inches / mm	Thickness Inches / mm	Pcs Per Box	Approx Weight Per Bx (Kgs)
BT4BLTH	3/8 9.50	0.040 1.0	100	0.50
BT4BLTH	1/2 12.7	0.051 1.3	100	1.00
BT4BLTH	5/8 15.9	0.051 1.3	100	1.20
BT4BLTH	3/4 19.0	0.051 1.3	100	1.60



BUCKLES - Teeth type Stainless Steel Grade 316

B-Tec Part Code	Size Inches / mm	Thickness Inches / mm	Pcs Per Box	Approx Weight Per Bx (Kgs)
BT6BLTH	3/8 9.50	0.040 1.0	100	0.50
BT6BLTH	1/2 12.7	0.051 1.3	100	1.00
BT6BLTH	5/8 15.9	0.051 1.3	100	1.20
BT6BLTH	3/4 19.0	0.051 1.3	100	1.60

WING SEAL CLIP Stainless Steel Grade 304 for Coated / Uncoated Bands

B-Tec Part Code	Size		Thickness		Pcs Per Box	Approx Weight Per Bx (Kgs)
	Inches	/ mm	Inches	/ mm		
BT4CLUC	1/4	6.35	0.025	0.64	100	0.25
BT4CLUC	3/8	9.50	0.031	0.8	100	0.35
BT4CLUC	1/2	12.7	0.031	0.8	100	0.60
BT4CLUC	5/8	15.9	0.031	0.8	100	0.80
BT4CLUC	3/4	19.0	0.031	0.8	100	1.00

WING SEAL CLIP Stainless Steel Grade 316 for Coated / Uncoated Bands

B-Tec Part Code	Size		Thickness		Pcs Per Box	Approx Weight Per Bx (Kgs)
	Inches	/ mm	Inches	/ mm		
BT6CLUC	1/4	6.35	0.025	0.64	100	0.25
BT6CLUC	3/8	9.50	0.031	0.8	100	0.35
BT6CLUC	1/2	12.7	0.031	0.8	100	0.60
BT6CLUC	5/8	15.9	0.031	0.8	100	0.80
BT6CLUC	3/4	19.0	0.031	0.8	100	1.00

WING SEAL CLIP LIGHT DUTY Stainless Steel Grade 304 for Insulation Bands

B-Tec Part Code	Size		Thickness		Pcs Per Box	Approx Weight Per Bx (Kgs)
	Inches	/ mm	Inches	/ mm		
BT4CLUN	3/8	9.50	0.031	0.72	100	0.25
BT4CLUN	1/2	12.7	0.031	0.72	100	0.40
BT4CLUN	5/8	15.9	0.031	0.72	100	0.55
BT4CLUN	3/4	19.0	0.031	0.72	100	0.70

WING SEAL CLIP LIGHT DUTY Stainless Steel Grade 316 for Insulation Bands

B-Tec Part Code	Size		Thickness		Pcs Per Box	Approx Weight Per Bx (Kgs)
	Inches	/ mm	Inches	/ mm		
BT6CLUN	3/8	9.50	0.031	0.72	100	0.25
BT6CLUN	1/2	12.7	0.031	0.72	100	0.40
BT6CLUN	5/8	15.9	0.031	0.72	100	0.55
BT6CLUN	3/4	19.0	0.031	0.72	100	0.70



CRIMP SEAL Stainless Steel Grade 304 for Insulation Bands

B-Tec Part Code	Size Inches / mm	Thickness Inches / mm	Pcs Per Box	Approx Weight Per Bx(Kgs)
BT4CRSL	1/2 12.7	0.024 0.6	1000	4.50
BT4CRSL	5/8 15.9	0.024 0.6	1000	6.50
BT4CRSL	3/4 19.0	0.024 0.6	1000	8.00



CRIMP SEAL Stainless Steel Grade 316 for Insulation Bands

B-Tec Part Code	Size Inches / mm	Thickness Inches / mm	Pcs Per Box	Approx Weight Per Bx(Kgs)
BT6CLSL	1/2 12.7	0.024 0.6	1000	4.50
BT6CLSL	5/8 15.9	0.024 0.6	1000	6.50
BT6CLSL	3/4 19.0	0.024 0.6	1000	8.00



Applications of Insulation Band

PRE-FIT STAINLESS STEEL BAND

Pre-fit is a ready to use Band with a Wing Seal Clip or a Buckle fitted to it. These Bands save upto 30% time and also can save labour costs in larger projects. Tools used are BTST005 / BTST009. Available in Austenitic Stainless Steel Grades 304 and 316 bands with Performance Polymer Alloy (PPA)571 / Polyester coating.



PRE-FIT COATED STAINLESS STEEL BAND

SS304 Coated Band with Clips

B-Tec Part Code	Type	Width	Thickness (mm)	Finished Length	Breaking strength Kgs(lbs)	Suitable clip	Suggested Tool
BT4PFCC	6.35	1/4	0.38/1.1	Custom length	127(280)	BT4CLUN	BTST005/BTST009
BT4PFCC	9.5	3/8	0.38/1.1		190(420)	BT4CLUN	BTST005/BTST009
BT4PFCC	12.7	1/2	0.38/1.1		255(562)	BT4CLUN	BTST005/BTST009
BT4PFCC	15.9	5/8	0.38/1.1		320(705)	BT4CLUN	BTST005/BTST009
BT4PFCC	19	3/4	0.38/1.1		380(840)	BT4CLUN	BTST005/BTST009
BT4PFCN	9.5	3/8	0.38/1.1		190(420)	BT4CLUC	BTST005/BTST009
BT4PFCN	12.7	1/2	0.38/1.1		255(562)	BT4CLUC	BTST005/BTST009
BT4PFCN	15.9	5/8	0.38/1.1		320(705)	BT4CLUC	BTST005/BTST009
BT4PFCN	19	3/4	0.38/1.1		380(840)	BT4CLUC	BTST005/BTST009

SS316 Coated Band with Clips

B-Tec Part Code	Type	Width	Thickness (mm)	Finished Length	Breaking strength Kgs(lbs)	Suitable clip	Suggested Tool
BT6PFCC	6.35	1/4	0.38/1.1	Custom length	135(300)	BT6CLUN	BTST005/BTST009
BT6PFCC	9.5	3/8	0.38/1.1		203(450)	BT6CLUN	BTST005/BTST009
BT6PFCC	12.7	1/2	0.38/1.1		271(600)	BT6CLUN	BTST005/BTST009
BT6PFCC	15.9	5/8	0.38/1.1		340(750)	BT6CLUN	BTST005/BTST009
BT6PFCC	19	3/4	0.38/1.1		407(900)	BT6CLUN	BTST005/BTST009
BT6PFCN	9.5	3/8	0.38/1.1		203(450)	BT6CLUC	BTST005/BTST009
BT6PFCN	12.7	1/2	0.38/1.1		271(600)	BT6CLUC	BTST005/BTST009
BT6PFCN	15.9	5/8	0.38/1.1		340(750)	BT6CLUC	BTST005/BTST009
BT6PFCN	19	3/4	0.38/1.1		407(900)	BT6CLUC	BTST005/BTST009

PRE-FIT UNCOATED STAINLESS STEEL BAND

SS304 Uncoated Band with Clips & Buckles

B-Tec Part Code	Type	Width	Thickness (mm)	Finished Length	Breaking strength Kgs(lbs)	Suitable clip/buckle	Suggested Tool
BT4PFUC	9.5 x 0.38	3/8	0.38	Custom length	190(420)	BT4CLUN	BTST005/BTST009
BT4PFUC	12.7 x 0.38	1/2	0.38		255(562)	BT4CLUN	BTST005/BTST009
BT4PFUC	15.9 x 0.38	5/8	0.38		320(705)	BT4CLUN	BTST005/BTST009
BT4PFUC	19 x 0.38	3/4	0.38		380(840)	BT4CLUN	BTST005/BTST009
BT4PFUB	12.7 x 0.76	1/2	0.76		510(1125)	BT4BLTH	BTST002/BTST005
BT4PFUB	15.9 x 0.76	5/8	0.76		637(1405)	BT4BLTH	BTST002/BTST005
BT4PFUB	19 x 0.76	3/4	0.76		760(1680)	BT4BLTH	BTST002/BTST005

SS316 Uncoated Band with Clips & Buckles

B-Tec Part Code	Type	Width	Thickness (mm)	Finished Length	Breaking strength Kgs(lbs)	Suitable clip/buckle	Suggested Tool
BT6PFUC	9.5 x 0.38	3/8	0.38	Custom length	203(450)	BT6CLUN	BTST005/BTST009
BT6PFUC	12.7 x 0.38	1/2	0.38		271(600)	BT6CLUN	BTST005/BTST009
BT6PFUC	15.9 x 0.38	5/8	0.38		340(750)	BT6CLUN	BTST005/BTST009
BT6PFUC	19 x 0.38	3/4	0.38		407(900)	BT6CLUN	BTST005/BTST009
BT6PFUC	12.7 x 0.76	1/2	0.38		542(1200)	BT6CLUN	BTST005/BTST009
BT6PFUC	15.9 x 0.76	5/8	0.38		680(1500)	BT6CLUN	BTST005/BTST009
BT6PFUC	19 x 0.76	3/4	0.38		813(1800)	BT6CLUN	BTST005/BTST009
BT6PFUB	12.7 x 0.38	1/2	0.38		271(600)	BT6BLTH	BTST002/BTST005
BT6PFUB	15.9 x 0.38	5/8	0.38		340(750)	BT6BLTH	BTST002/BTST005
BT6PFUB	19 x 0.38	3/4	0.38		407(900)	BT6BLTH	BTST002/BTST005
BT6PFUB	12.7 x 0.76	1/2	0.76		542(1200)	BT6BLTH	BTST002/BTST005
BT6PFUB	15.9 x 0.76	5/8	0.76		680(1500)	BT6BLTH	BTST002/BTST005
BT6PFUB	19 x 0.76	3/4	0.76	813(1800)	BT6BLTH	BTST002/BTST005	



*Pre-fit bands are also available with crimping seals. Please contact for more information.

MAKE YOUR OWN PRE-FIT BAND

If you are not sure of the Pre-fit band length, you can buy the band in reels along with clips/buckles and make your own Pre-fit band using our tool BTST015.

Stainless steel band bending tool



Banding Tool BTST015



Band size: 3/8" to 3/4" (9.52 mm to 19.05 mm)

How to use the tool:

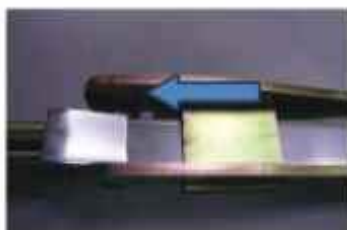
1. Open the tool and insert the band as shown.



2. Close the tool and squeeze the handle to bend the band.



3. Open the handle and push the band forward.
Remove the band from the tool.



4. Insert the Clip/Buckle/Seal to bent end.

INDUSTRIAL IDENTIFICATION TAGS

Cable and Industrial Identification System

Material : Stainless Steel 304, Stainless Steel 316, Aluminium
 Types/Models : A, B, C, D, E, F, G, H and custom made models
 Applications : Cable Identification, Valve/Pipe Identification, Equipment Identification etc



Part Number	Material	TAG Size W x L mm	Approx Thickness mm	STYLE
BTID 400 SP	SS 304	7.9 x 60	0.25	 TYPE A Slot size 10 mm Bridge Type
BTID 400 A	SS 304	9.5 x 89	0.38	
BTID 401 A	SS 304	12 x 89	0.38	
BTID 402 A	SS 304	12 x 100	0.38	
BTID 404 A	SS 304	12 x 89	0.38	
BTID 600 SP	SS 316	7.9 x 60	0.25	
BTID 600 A	SS 316	9.5 x 89	0.38	
BTID 601 A	SS 316	12 x 89	0.38	
BTID 602 A	SS 316	12 x 100	0.38	
BTID 604 A	SS 316	19 x 89	0.38	
BTID 404 B	SS 304	19 x 89	0.38	 TYPE B Slot width 13 mm
BTID 405 B	SS 304	19 x 50	0.38	
BTID 604 B	SS 316	19 x 89	0.38	
BTID 605 B	SS 316	19 x 50	0.38	
BTID 401 C	SS 304	12 x 89	0.38	 TYPE C Hole Dia 3 mm
BTID 601 C	SS 316	12 x 89	0.38	
BTID 603 D	SS 316	12 x 50	0.38	 TYPE D Hole Dia 6 mm
BTID 703 D	Aluminium	12 x 50	0.60	
BTID 401 E	SS 304	12 x 89	0.38	 TYPE E Hole Dia 3 mm
BTID 404 E	SS 304	19 x 89	0.38	
BTID 601 E	SS 316	12 x 89	0.38	
BTID 604 E	SS 316	19 x 89	0.38	
BTID 406 F	SS 304	19 x 89	0.25	 TYPE F Hole size 10.6 x 6.5 mm Smooth Bridge
BTID 606 F	SS 316	19 x 89	0.25	
BTID 407 G	SS 304	30 dia	0.38	 TYPE G Hole Size 3 mm
BTID 408 G	SS 304	50 dia	0.38	
BTID 607 G	SS 316	30 dia	0.38	
BTID 608 G	SS 316	50 dia	0.38	
BTID 707 G	Aluminium	30 dia	0.60	
BTID 708 G	Aluminium	50 dia	0.60	
BTID 407 H	SS 304	30 x 30	0.38	 TYPE H Hole size 3 mm
BTID 408 H	SS 304	50 x 50	0.38	
BTID 607 H	SS 316	30 x 30	0.38	
BTID 608 H	SS 316	50 x 50	0.38	
BTID 707 H	Aluminium	30 x 30	0.60	
BTID 708 H	Aluminium	50 x 50	0.60	



EASY READER STAINLESS STEEL MARKERS

- Easy readable characters
- Available in SS 304 and SS 316
- Recommended for Offshore / Underground / Difficult to access marking applications
- Use Characters with Carriers



Stainless Steel Gr.304				Stainless Steel Gr.316			
Part No.	Description	Qty per Box	Weight / Box(Kg)	Part No.	Description	Qty per Box	Weight / Box(Kg)
BT4ERM 0	Character 0/O	100	0.2	BT6ERM 0	Character 0/O	100	0.2
BT4ERM 1	Character 1/I	100	0.2	BT6ERM 1	Character 1/I	100	0.2
BT4ERM 2	Character 2	100	0.2	BT6ERM 2	Character 2	100	0.2
BT4ERM 3	Character 3	100	0.2	BT6ERM 3	Character 3	100	0.2
BT4ERM 4	Character 4	100	0.2	BT6ERM 4	Character 4	100	0.2
BT4ERM 5	Character 5	100	0.2	BT6ERM 5	Character 5	100	0.2
BT4ERM 6	Character 6	100	0.2	BT6ERM 6	Character 6	100	0.2
BT4ERM 7	Character 7	100	0.2	BT6ERM 7	Character 7	100	0.2
BT4ERM 8	Character 8	100	0.2	BT6ERM 8	Character 8	100	0.2
BT4ERM 9	Character 9	100	0.2	BT6ERM 9	Character 9	100	0.2
BT4ERM A	Character A	100	0.2	BT6ERM A	Character A	100	0.2
BT4ERM B	Character B	100	0.2	BT6ERM B	Character B	100	0.2
BT4ERM C	Character C	100	0.2	BT6ERM C	Character C	100	0.2
BT4ERM D	Character D	100	0.2	BT6ERM D	Character D	100	0.2
BT4ERM E	Character E	100	0.2	BT6ERM E	Character E	100	0.2
BT4ERM F	Character F	100	0.2	BT6ERM F	Character F	100	0.2
BT4ERM G	Character G	100	0.2	BT6ERM G	Character G	100	0.2
BT4ERM H	Character H	100	0.2	BT6ERM H	Character H	100	0.2
BT4ERM J	Character J	100	0.2	BT6ERM J	Character J	100	0.2
BT4ERM K	Character K	100	0.2	BT6ERM K	Character K	100	0.2
BT4ERM L	Character L	100	0.2	BT6ERM L	Character L	100	0.2
BT4ERM M	Character M	100	0.2	BT6ERM M	Character M	100	0.2
BT4ERM N	Character N	100	0.2	BT6ERM N	Character N	100	0.2
BT4ERM P	Character P	100	0.2	BT6ERM P	Character P	100	0.2
BT4ERM Q	Character Q	100	0.2	BT6ERM Q	Character Q	100	0.2
BT4ERM R	Character R	100	0.2	BT6ERM R	Character R	100	0.2
BT4ERM S	Character S	100	0.2	BT6ERM S	Character S	100	0.2
BT4ERM T	Character T	100	0.2	BT6ERM T	Character T	100	0.2
BT4ERM U	Character U	100	0.2	BT6ERM U	Character U	100	0.2
BT4ERM V	Character V	100	0.2	BT6ERM V	Character V	100	0.2
BT4ERM W	Character W	100	0.2	BT6ERM W	Character W	100	0.2
BT4ERM X	Character X	100	0.2	BT6ERM X	Character X	100	0.2
BT4ERM Y	Character Y	100	0.2	BT6ERM Y	Character Y	100	0.2
BT4ERM Z	Character Z	100	0.2	BT6ERM Z	Character Z	100	0.2
BT4ERM /	Character /	100	0.2	BT6ERM /	Character /	100	0.2
BT4ERM -	Character -	100	0.2	BT6ERM -	Character -	100	0.2
BT4ERM +	Character +	100	0.2	BT6ERM +	Character +	100	0.2

EASY READER CARRIERS

SS 304 with Black Polyester Coating

Part No	Width mm	Length mm	No. of Characters	Qty/Bx	Weight per Bx(Kg)
BT4ECB093	10	93	5	100	0.4
BT4ECB108	10	108	7	100	0.5
BT4ECB131	10	131	9	100	0.6
BT4ECB146	10	146	11	100	0.7
BT4ECB188	10	188	15	100	0.8
BT4ECB203	10	203	17	100	0.91

SS 316 with Black Polyester Coating

Part No	Width mm	Length mm	No. of Characters	Qty/Bx	Weight per Bx(Kg)
BT6ECB093	10	93	5	100	0.4
BT6ECB108	10	108	7	100	0.5
BT6ECB131	10	131	9	100	0.6
BT6ECB146	10	146	11	100	0.7
BT6ECB188	10	188	15	100	0.8
BT6ECB203	10	203	17	100	0.91

* Also available in different colours upon special request.

* Custom made carrier strips are available in different lengths.



METAL ID TAG MACHINES



BTID 101
Manual ID Tag Embossing Machine
Character size: 3mm / 4mm / 5mm
Max Thk: for SS - upto 0.50 mm
for Aluminium - upto 1.0 mm



BTID 102
CIM, Italy Computerized Metal Plate Embosser
Character Size: 3mm / 4mm / 5mm / 6mm
Max Thk: for SS - upto 0.4 mm
for Aluminium - upto 0.9 mm



BTID 100
Dymo Metal Tape Embossing System
for SS Tapes 0.13mm thk
Tapes: BTID 104 (Size: 12mm x 6.3m) in SS 304
BTID106 (Size: 12 mm x 6.3m) in SS 316



BTID 110
Laser Engraving Machine for Tags
Fiber / CO₂ Laser 10W / 20W / 30W
Fully computerised



Customized Engraved Tags
made with Laser Engraving Machine



Customized Embossed Tags
made with Computerized Embossing Machine

HAND TOOLS



Code : **BTST002**

Band Strapping Manual Tool

For 6mm-19mm width
(Max 0.76mm thick)
Weight: 1.75 Kg



Code : **BTST003**

Band Strapping Manual Tool

For 19mm-44mm width
(Max 1.3mm thick)
Weight: 4.75 Kg



Code : **BTST005**

Band Strapping Ratchet type Manual Tool

For 6mm-19mm width
(Max 0.76 mm thick)
Weight: 1.50 Kg



Code : **BTST006**

Band Strap Tensioning & Cutting Tool(Light duty)

For 6mm-16mm width
(Max 0.76mm Thk)for moderate tension application
Weight: 0.5 Kg



Code : **BTCT007**

Cable Tie Tensioning & Cutting Tool

For 4.6mm-12mm width
Weight: 0.75 Kg



Code : **BTCT008**

Cable Tie Tensioning & Auto Cutting Tool

For 4.6mm & 7.9mm width
Weight: 0.7 Kg



Code: **BTST009**

Tensioning & Cutting Tool

For 6mm - 16mm width
For Bands/coated Bands and Ties
Weight: 1.0 Kg



Code: **BTST010**

Band Strapping Mini Tool

For 3mm - 10mm width
Weight: 0.75 Kg



Code: **BTST011**

Insulation Band Push Bar Tensioning & Cutting Tool

For 9mm - 19mm width (Max thk 0.6mm) with crimping seals
Weight: 1.20 Kg

HAND TOOLS



Code: **BTST015**

Pre-Fit Band Bending Tool

For 6mm - 19 mm width
Weight: 0.4 Kg



Code: **BTST018**

Banding Seal Crimping Tool

For 12.5mm - 19mm width
Weight: 0.75 Kg



Code: **BTST019**

Band Cutting Tool

For 6mm - 32 mm width
(Max 1.2 mm thk)
Weight: 0.8 Kg



Code: **BTST020**

Cable tie tensioning Hook

Used with multilock & releasable ties
Weight: 0.4 Kg

ACCESSORIES



Cable Ferrule Marking System



Label Printer



Nylon Cable Ties



Rubber Sleeve Lining for Bands



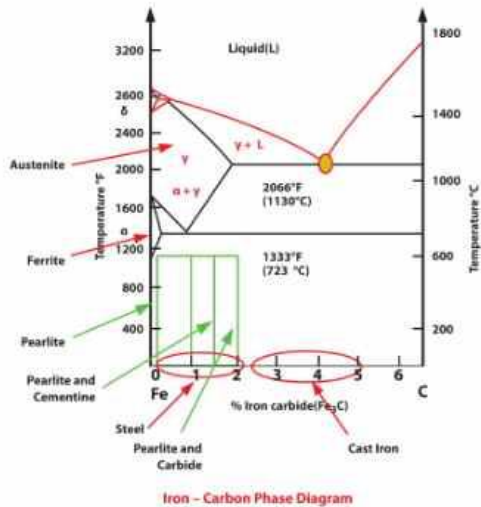
Heat Shrink Sleeves



Canon Image Prograf Printers:
Ideal for CAD/GIS, Graphics,
Arts & Photo Applications.

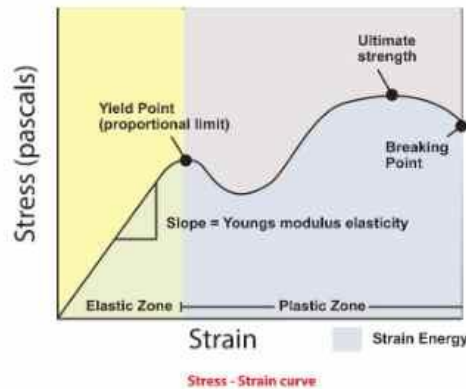
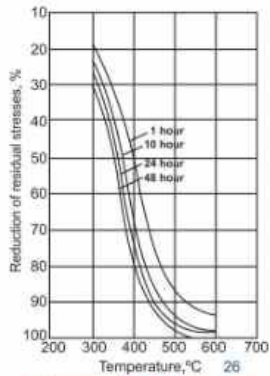
MATERIAL DATA SHEET

Metal Specifications	SS 201	SS 304	SS 316	Monel®400	Inconel®625	GCS
COMMON APPLICATIONS	Power, Municipal Construction, Utility, Mining, Signage, General fastening	Oil & Gas, down stream, Chemical, Food, Hospitals Power, Automotive, General Industries,	Oil & Gas upstream and down stream, Marine, Chemical, Petrochemical, Paper, Food, Pharmaceutical Subsea applications	High corrosive Industrial environments, Subsea applications	High corrosive and high temperature industrial environments, Nuclear, Aerospace Subsea applications	Mild environment applications, General applications
INTERNATIONAL STANDARDS	ASTM A-666 UNS S20100	ASTM A666 UNS S 30400	ASTM A-666 UNS S 31600	ASTM B-127 UNS N04400	ASTM B-443 UNS N06625	ASTM A-109
CHEMICAL COMPOSITION %	C 0.15 max	C 0.08 max	C 0.08 max	C 0.3 max	C 0.10 max	C 0.25 max
	Mn 5.5 -7.5	Mn 2.0 max	Mn 2.0 max	Mn 2.0 max	Mn 5 max	Mn 0.60 max
	Si 0.75 max	Si 1.0 max	Si 0.75 max	Si 0.50 max	Cr 20.0-23.0 max	P 0.045 max
	Cr 16.0-18.0	Cr 18.0-20.0	Cr 16.0-18.0	Ni 63.0-70.0	Ni Balance	-
	Ni 3.50-5.50	Ni 8.0-10.5	Ni 10.0 -14.0	Cu 28.0-34.0	Ti 0.4 max	-
	N 0.25 max	-	Mo 2.0-3.0	Fe 2.5 max	Fe 2.5 max	-
	-	-	-	S 0.024 max	Mo 8.0-10.0	-
PHYSICAL PROPERTIES Density, Kg/m ³ (Lb/in ³)	7800 (0.281)	8010 (0.29)	8010 (0.29)	8820 (0.319)	8440 (0.305)	7820 (0.283)
STRUCTURE	Austenitic	Austenitic	Austenitic	-	-	Ferritic
Mean Coefficient of Thermal Expansion in/in/ °F x 10 ⁻⁶	32-212 °F 8.70	9.40	8.90	7.70	7.40	6.30
32-600 °F	9.70	9.60	9.00	8.80	-	7.30
32-1000 °F	10.20	10.20	9.70	9.10	-	7.90
32-1200 °F	10.50	10.40	10.3	9.30	-	8.20
Melting Range °F/ °C	2550-2650 °F 1400-1454 °C	2550-2590 °F 1400-1442 °C	2540-2630 °F 1393-1443 °C	2500-2550 °F 1370-1400 °C	2500-2550 °F 1370-1400 °C	- -
ELECTRICAL PROPERTIES	Non-Magnetic	Non-Magnetic	Non-Magnetic	-	Non-Magnetic	Magnetic
Magnetic PERMEABILITY, Annealed	$\mu = 1.02$	$\mu = 1.008$	$\mu = 1.008$	-	$\mu = 1.$	$\mu = 1500-2000$
Elec. Resistivity, Microhm-cm, 70 °F	69.00	70.00	74.00	5.10	70.00	17.2
MECHANICAL PROPERTIES						
Rockwell Hardness (Vickers Hardness)	90-95R _B (183-218Hv)	70-90R _B (127-183Hv)	70-85R _B (127-162Hv)	60-80R _B (108-147Hv)	88-94R _B (178-201Hv)	80-95R _B (147-218Hv)
Ultimate Tensile Strength PSI (Kg/Sq.mm)	100000 (70.30)	75000 (52.73)	80000 (56.25)	70000 (49.21)	120000 (84.37)	84000 (59.05)
Yield Strength PSI (Kg/Sq mm)	45000 (31.64)	30000 (21.09)	35000 (24.61)	32000 (22.50)	60000 (42.18)	80000 (56.25)
% of Elongation in 2 inches	45	35	40	35	35	10
CORROSION RESISTANCE						
General Applications	Good	Very Good	Very Good	Good	Good	Fair
Mild Industrial Environment	Good	Very Good	Excellent	Good	Good	Good / Fair
Fresh water / Rain	Good	Very Good	Excellent	Good	Good	Good / Fair
Marine Atmosphere	Fair	Good	Very Good	Excellent	Excellent	Poor
Salt water / Subsea	No	No	Good	Excellent	Excellent	No
Mild Chemical	Fair	Fair	Good	Good	Good	No
Oxidizing Chemical	Fair	Fair	Good	Good	Good	No
Reducing Chemical	No	No	Good	Good	Good	No



Austenitic steel: Metallic, non-magnetic solid solution of carbon and iron that exists in steel above the critical temperature of 1333°F (723°C). It contains 16 to 26 percent chromium and up to 35 percent nickel, usually having the highest corrosion resistance.

Ferritic steel: Type of steel that is composed of less than 0.2% carbon. It is magnetic, ductile, and resistant to corrosion. Standard ferritic steels contain 10 to 27 percent chromium and are nickel-free. Mostly used in architectural products and auto parts and kitchenware.



Breaking strength- A measurement of the force required to pull a material (the tensile load) to the point where it breaks.

Elongation- This is a measure of ductility of a material which is expressed in percentage of length of the material before it is stretched. It is the amount of stretch occurs before the material breaks.

Loop tensile strength- This is a measure of tensile strength required for failure of a cable tie or loop band. Usually a radial force is applied to the loop using a split D tensioning device.

Ultimate Strength- Ultimate tensile strength is measured by the maximum stress that a material can withstand while being stretched or pulled before breaking.

Yield strength- The stress at which the property of material changes from elastic to plastic deformation.

Technical Notes

An Ideal Cable Tie:-

- Should hold cables to trays and ladders, bundle securely and not to induce stress or damage the protective sheath
- Should not cause local heating due to induction heating or interfere with power or signals in the cables
- To be strong enough to hold the cables not only when static, but also when subjected to vibration and shock, for example, in an earthquake
- To be resistant to fire, physical abrasion, hazardous gas or liquid, extreme temperature and ultra-violet light
- Most importantly, during a fire it should be strong enough to hold communication and emergency services lines for rescue and firefighting equipment and keep overhead wires in place to prevent blockage of escape routes
- Should have its life of tie to be same or more than the life of the cable

Plastic cable ties have limited mechanical strength, creep under load, little weathering resistance and often low melting temperature.

Stainless steel cable ties (with or without halogen-free/fire retardant coating) are good enough in these conditions. They have inherent strength, which will support a full load of cables mounted cable trays & ladders.

B-Tec Stainless Steel Cable Ties

B-Tec stainless steel ties and straps are made from premium quality non-magnetic* stainless steel available Coated and Uncoated types. Finely controlled coating in Polyester which is non-toxic, halogen free, flame retardant and yet remain flexible even in sub-zero temperatures, are now internationally approved for hazardous and corrosive environments. B-Tec Stainless steel cable ties are UL Listed.

B-Tec cable ties are manufactured from Austenitic Stainless steel and special processing is done to retain non-magnetic property, even after the cold working process of manufacturing.

** If ties are magnetic, when the current passes through the cable, the magnetic field will induce Eddy Current in the magnetic cable tie and promote local heating. In highly sensitive electronic equipment, the induced magnetic field interferes with the signals within the conducting cables.*

More Technical Notes...

Types of B-Tec Cable Ties/Bands

TYPES	ADVANTAGES	DISADVANTAGES
Releasable Ties	<ul style="list-style-type: none"> • Re-usable • Economical • Available in various sizes 	Locking head looks bulky Not Self Locking
Ball Lock Ties (Self-locking)	<ul style="list-style-type: none"> • Simple & Economical • Easy to Install 	Slight Slippage can happen under heavy vibration
Multi-Lock Ties (Self-locking)	<ul style="list-style-type: none"> • No slippage even under very heavy vibration • Very tight installation • Can be used for tying/bundling hard products such as bare cables, pipes, tubes, ducts etc 	Slightly Higher Price compared to Ball lock ties
Coated/Uncoated Bands	<ul style="list-style-type: none"> • Available in coils for easy handling. • No wastage & no large inventory of sizes • Can be used for tying/bundling hard products such as bare cables, pipes, tubes, ducts etc. 	Buckles are separate and installation is not as simple as ties (For easy installations, use our Pre-fit bands)

Conversion Table

PROPERTY	UNIT	SYMBOL	CONVERSION		
			from	to	
Length	meter	m	inch	mm	1 inch = 25.4 mm
	centimeter	cm	inch	cm	1 inch = 2.54 cm
	millimeter	mm	foot	mm	1 ft = 304.8 mm
	foot	ft	foot	m	1 ft = 0.3048 m
Mass	gram	g	Kg	g	1 Kg = 1000 g
	kilo gram	kg	kg	lb	1 Kg = 2.2 lb
	pound	lb			
Temperature	Celsius	C	C	F	$F = (1.8 \times C) + 32$
	Fahrenheit	F			
Force	Newton	N	Lbs	N	1 Lbs = 4.448N
	Pound	Lbs	Kgf	N	1 Kgf = 9.807N
	Kilogram-force	Kgf			

Abbreviations

cm	Centimeter
m	Meter
ft	Feet
kg	Kilogram
lbs	Pound
dia	Diameter
C	Celsius
F	Fahrenheit
C	Carbon
Mn	Manganese
Si	Silicon
Cr	Chromium
Ni	Nickel
Cu	Copper
Fe	Iron
Ti	Titanium
Al	Aluminum
Mo	Molybdenum
S	Sulphur
SS	Stainless steel
PPA	Performance Polymer Alloy
PVC	Poly Vinyl Chloride
Ctd	Coated
UL	Under Writers Laboratory
Unctd	Uncoated
ASTM	American Society for Testing and Materials
UNS	Unified Numbering System
Thk	Thickness



STAINLESS STEEL CABLE TIES | BANDS | IDENTIFICATION TAGS

STRONG | NON TOXIC | LOW SMOKE | UV RESISTANT | HALOGEN FREE | FLAME RETARDANT | CORROSION RESISTANT



B-Tec Innovations

SY No. 179/4, Chandapura Road
Near Lions Eye Hospital, Dommasandra Post
Sarjapura Hobli, Bengaluru - 562 125, Karnataka, India.
info@btccinnovations.in
www.btccinnovations.in